

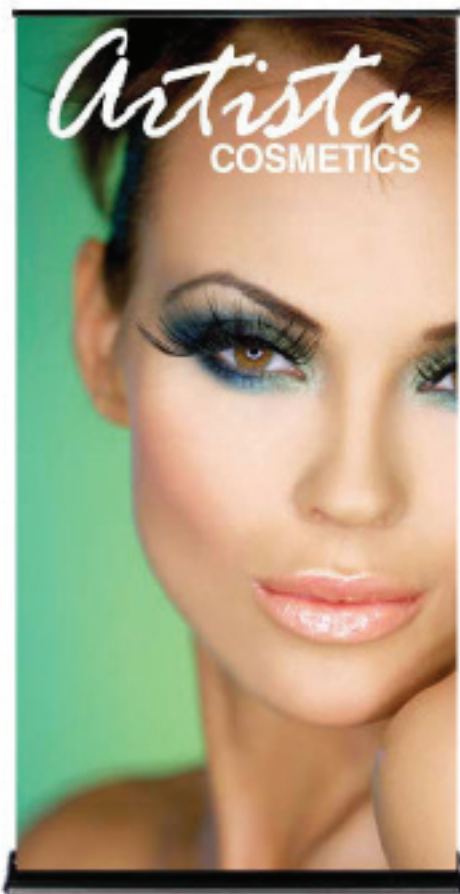
REWIND RETRACTABLE



VISUAL

IMAGINE • CREATE • ACTIVATE

36" BANNER STAND



BLACK BASE IS AVAILABLE FOR 24" AND 36" ONLY

PRODUCT FEATURES

Durable and uniquely designed, this aluminum stand is the perfect combination of versatility, appeal, and affordability. Set up is quick and easy; banner attaches by Velcro.

Graphic Size: 36" W x 72", 84", 92" (with a 6" bleed on bottom).
Clean edge to edge display.

Travel Bag Included (41" x 12" x 4").

Height 72", 84", 92"

Width 37.65"

FINISHING

Banner attaches to the top and bottom of stand by Velcro or clamp bar 6" bleed on bottom. Vinyl or fabric insert.

CONSTRUCTION

Aluminum base w/plastic end caps

Aluminum pole w/plastic hook connector

Plastic top w/Velcro

WEIGHTS - DIMENSIONS

Shipping Weight 16 lbs (stand only)

18 lbs (with graphic)

Shipping Dimensions 41" x 13" x 6"

PARTS LIST

- | | |
|--------------------|---------------------------------|
| (1) Travel bag | (1) Retractable base w/end caps |
| (1) Telescope pole | (1) Top bar w/end caps (Velcro) |
| (1) Support pole | (1) Roll Velcro |
| (1) Allen key | |

TABLETOP PRODUCT FEATURES

Dimension Size: 36" W x 36" to 59"H

Graphic Size: 36" W x 36" to 59"H

***Table Top Option**

